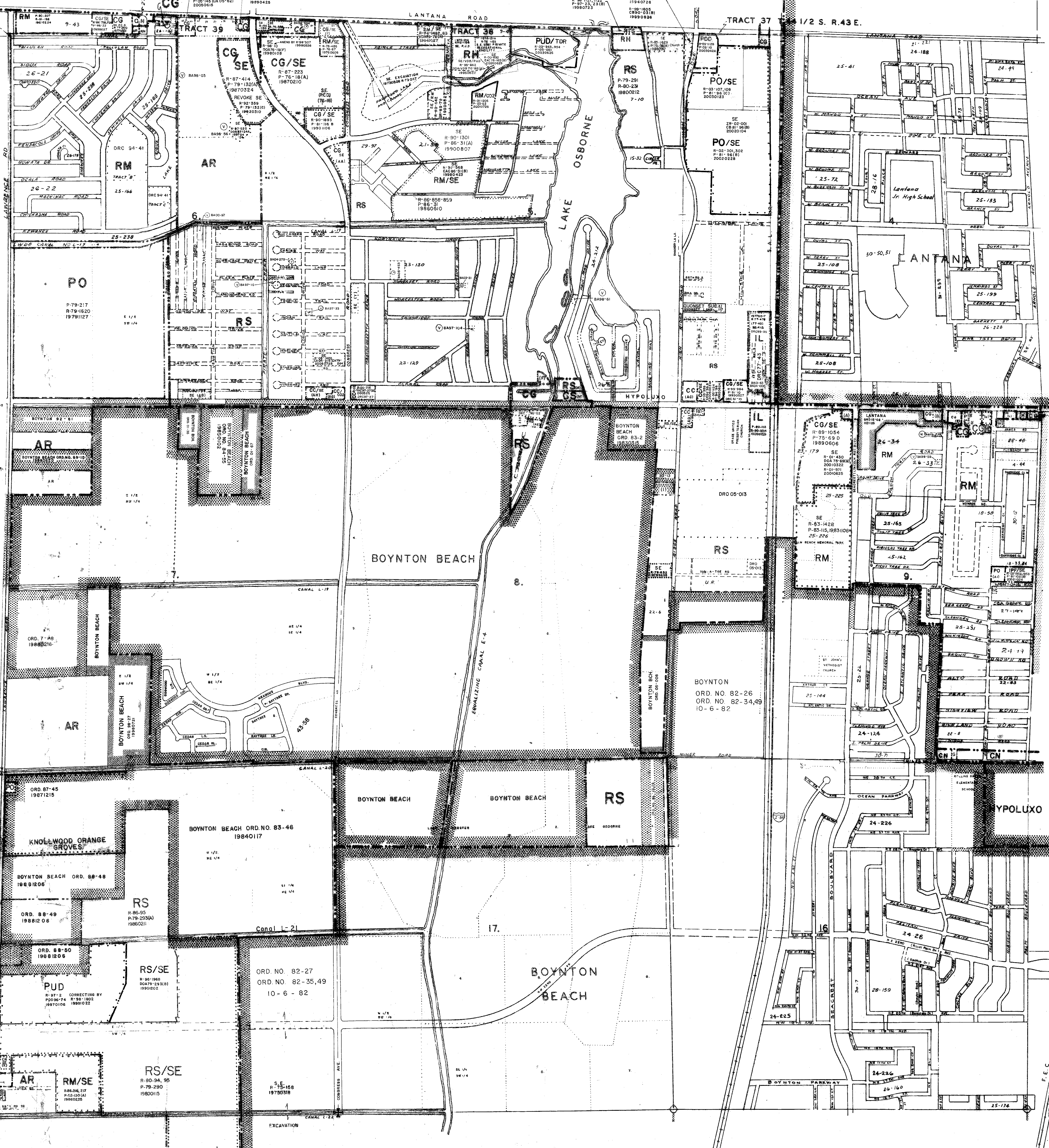


ATLANTIS



RESOLUTIONS			
188-00-41	188-00-42	188-00-43	188-00-44
188-00-45	188-00-46	188-00-47	188-00-48
188-00-49	188-00-50	188-00-51	188-00-52
188-00-53	188-00-54	188-00-55	188-00-56
188-00-57	188-00-58	188-00-59	188-00-60
188-00-61	188-00-62	188-00-63	188-00-64
188-00-65	188-00-66	188-00-67	188-00-68
188-00-69	188-00-70	188-00-71	188-00-72
188-00-73	188-00-74	188-00-75	188-00-76
188-00-77	188-00-78	188-00-79	188-00-80
188-00-81	188-00-82	188-00-83	188-00-84
188-00-85	188-00-86	188-00-87	188-00-88
188-00-89	188-00-90	188-00-91	188-00-92
188-00-93	188-00-94	188-00-95	188-00-96
188-00-97	188-00-98	188-00-99	188-00-100

----- PUD BOUNDARIES  
 - - - - - DISTRICT BOUNDARIES  
 ===== CORPORATE BOUNDARIES

The zoning category for the property indicated on this sheet may not be consistent with the property's Future Land Use designation under the Palm Beach County Comprehensive Plan. Please contact the Palm Beach County Planning Division at 100 Australian Avenue, West Palm Beach, FL, 33406, (561) 233-5300, to confirm the property's Future Land Use designation and other relevant Comprehensive Plan requirements.

RESOLUTIONS	
188-00-101	188-00-102
188-00-103	188-00-104
188-00-105	188-00-106
188-00-107	188-00-108
188-00-109	188-00-110
188-00-111	188-00-112
188-00-113	188-00-114
188-00-115	188-00-116
188-00-117	188-00-118
188-00-119	188-00-120

**PALM BEACH COUNTY, FLORIDA**  
**OFFICIAL ZONING DISTRICT MAP**

Scale 1" = 600' approx. Date 12/1/81

Quadrant 45 43B Sheet No. 19